



Terrestrial 3D  
**SCANNING**  
USING INNOVATIVE TECHNOLOGY

**SURVEY  
MORE,  
LESS  
OFTEN**

Learn how  
3D Laser Scanning  
will help you on  
your next project.

*D&A, P.C.*

**CAPABILITIES**

HIGH DEFINITION SCANNER  
SURVEYING HAS BEEN  
EVOLVING SINCE THE LATE  
1990'S

The LEICA 3D Scanner has:

- A 360° X 270° FIELD OF VIEW
- DIGITAL CAMERA FOR PHOTO OVERLAYS
- <6mm SPOT SIZE @ 50m
- <6mm POSITIONAL ACCURACY @ 50m
- <2mm MODELED SURFACE Precision
- OPTIMAL EFFECTIVE RANGE OF 1m - 100m PER SETUP

**SPECIFICATIONS**

Smart Scan Technology allows the operator to capture any region with finer detail.

**SITES  
SUITED FOR  
SCANNING**

- Sites with limited access, like Highways and Airport Runways
- Hard to reach or inaccessible surfaces, such as bridges and rock walls.
- Areas which are unsafe to directly occupy.
- High Detail or Congested Areas, such as Buildings, Tunnels & Plants
- Relatively open sites with minimal vegetation and few stationary obstruction.



Actual "Point Cloud Data" represented in each image of this brochure.

**DJ&A, P.C. Engineers. Planners. Surveyors.**

3203 Russell Street / Missoula, MT 59801  
P: (406)721-4320 F: (406)549-6371  
info@djanda.com

[www.djanda.com](http://www.djanda.com)

where to use the  
**LASER SCANNER**

- Highways & Roadways
- Bridges
- Retaining Walls
- Dams
- Geotechnical Analysis
- Emergency Repairs
  - Land Slides, Slumps, Washouts & Structure Collapse
- Volume, Quantity, Grade, Unstable Slope Surveys
- Tunnel & Cave Surveys
- Utility Surveys
  - Towers, Poles, Overhead Lines & Substations
- Cultural & Archaeological Surveys
- Industrial Plants
- Oil & Gas Refinery and Bulk Plants
- Buildings
  - Inside & Out
- Forensics
  - Crime & Accident Scenes

Get measurements from any data point

**ALWAYS CONSIDER**

**BENEFITS:**

Increased confidence in the mapping data

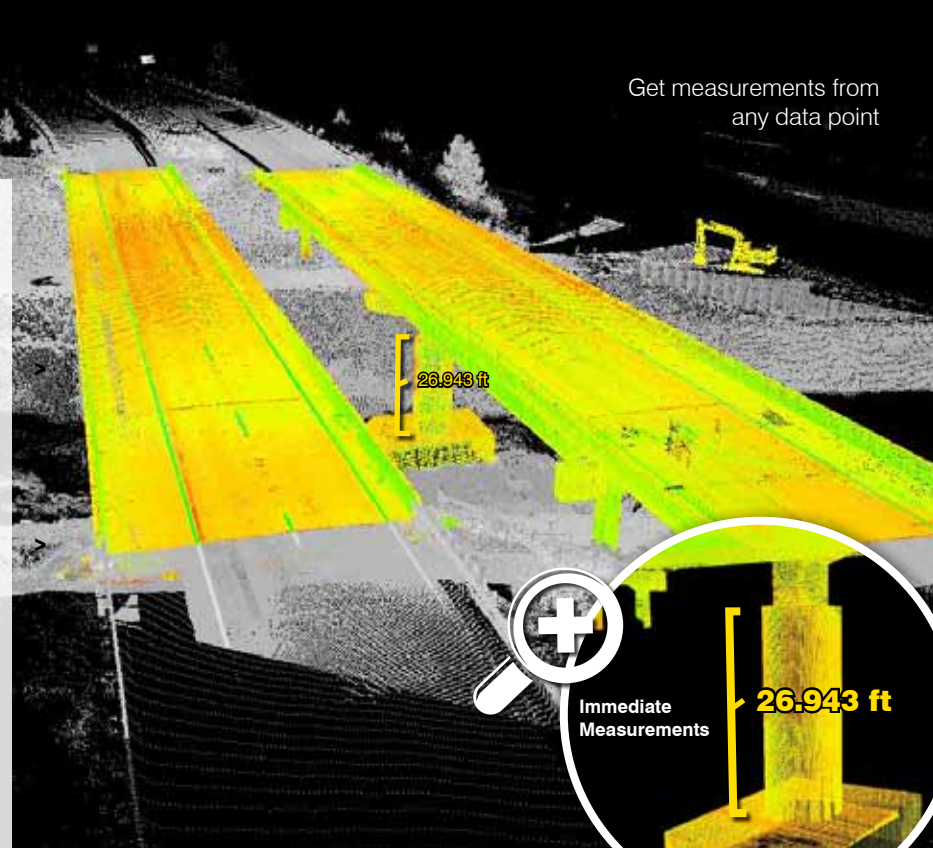
Potential for extracting additional data from the existing dataset at a later time

A fast turnaround on data or mapping

Time & cost savings on active or highly detailed project sites

Minimal return trips to remote sites

A record of as-constructed or existing site conditions to retrofit



Images: Full Field View 2) Structure Detail